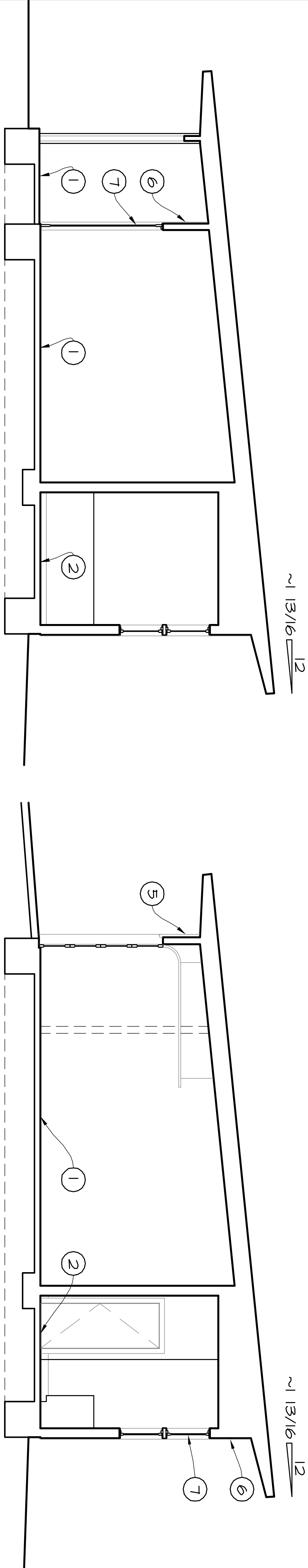


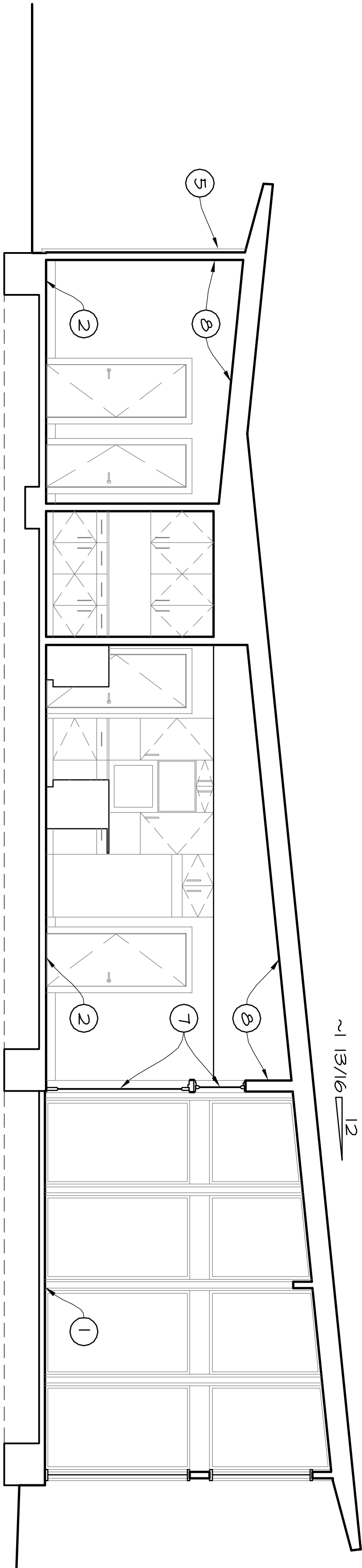
SECTION NOTES:

- EXTERIOR CONCRETE SLAB ON GRADE, STAINED W/ SLIP RESISTANT TEXTURE
- ACID ETCHED, STAINED, AND POLISHED INTERIOR CONCRETE SLAB.
- CERAMIC TILE ON BATHROOM FLOOR (TYP)
- SYNTHETIC EXTERIOR DECKING ON TREATED WOOD FRAMING.
- R-PANEL RIBBED GALVANIZED SIDING (26 GAUGE MIN. IN PRE-FINISHED RED COLOR)
- 1x6 CYPRESS WOOD SIDING (VERTICAL)
- VINYL CLAD WOOD CASEMENT WINDOWS, AND PATIO DOORS BY ANDERSEN (SEE PLAN FOR SIZES)
- 1/2" GYPSUM WALL BOARD INTERIOR WALL AND CEILINGS (PRIMED AND PAINTED, COLOR T.B.D.)



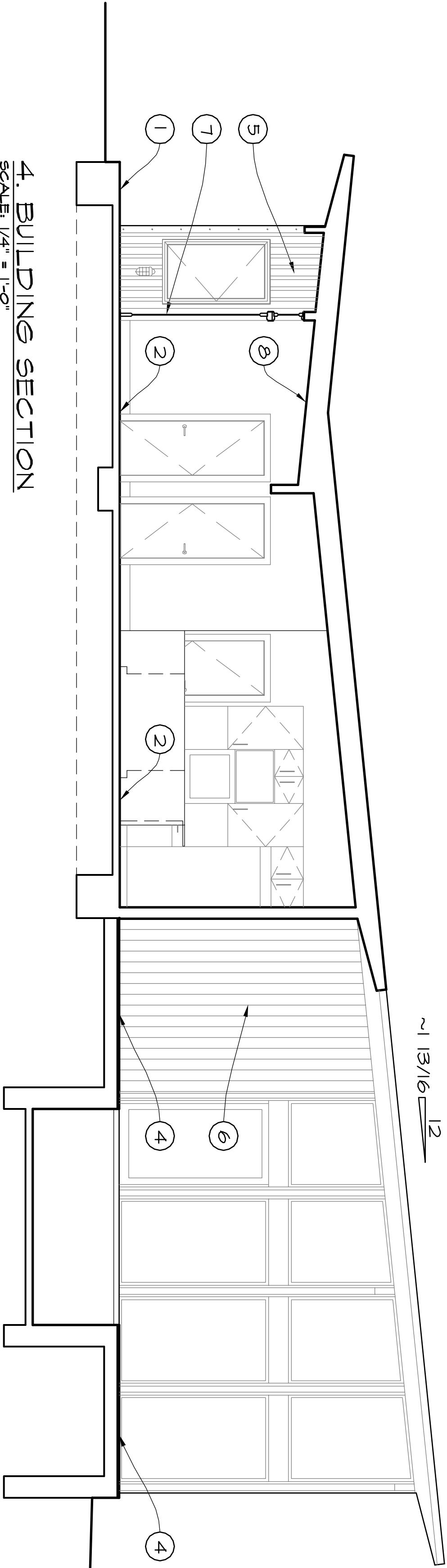
1. BUILDING SECTION

SCALE: 1/4" = 1'-0"



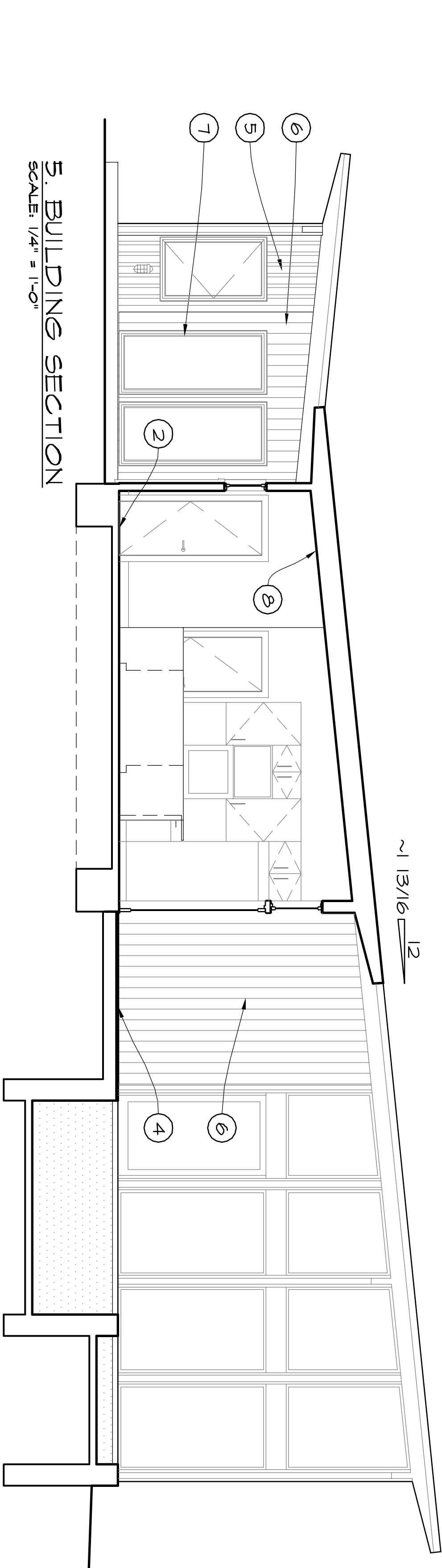
2. BUILDING SECTION

SCALE: 1/4" = 1'-0"



3. BUILDING SECTION

SCALE: 1/4" = 1'-0"



4. BUILDING SECTION

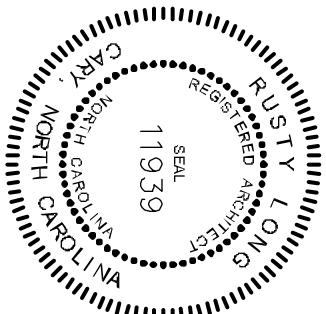
SCALE: 1/4" = 1'-0"

5. BUILDING SECTION

SCALE: 1/4" = 1'-0"

COPYRIGHT © 2011
RUSTY LONG ARCHITECT
ALL RIGHTS RESERVED.

THIS DRAWING IS THE PROPERTY
OF RUSTY LONG ARCHITECT
AND IS NOT TO BE REPRODUCED
OR COPIED IN WHOLE OR IN
PART WITHOUT WRITTEN
PERMISSION FROM THE
ARCHITECT.



PRICING
CONSTRUCTION
SET

1544 DIRKSON COURT
CASTLE NC 27511
419-602-4120

REVISIONS	
•	ISSUED FOR REVIEW
6/1/2011	ISSUED FOR BIDS

DATE: August 1, 2011
PROJECT #: 2011-JH-L01
DRAWN BY: RLT
CHECKED BY: RLT

ALLIGATOR
MODERN
SECTIONS

A9

- ☐ FOR CONSTRUCTION
☒ NOT FOR CONSTRUCTION

RUSTY LONG, ARCHITECT

SUSTAINABLE | MODERN | DESIGN