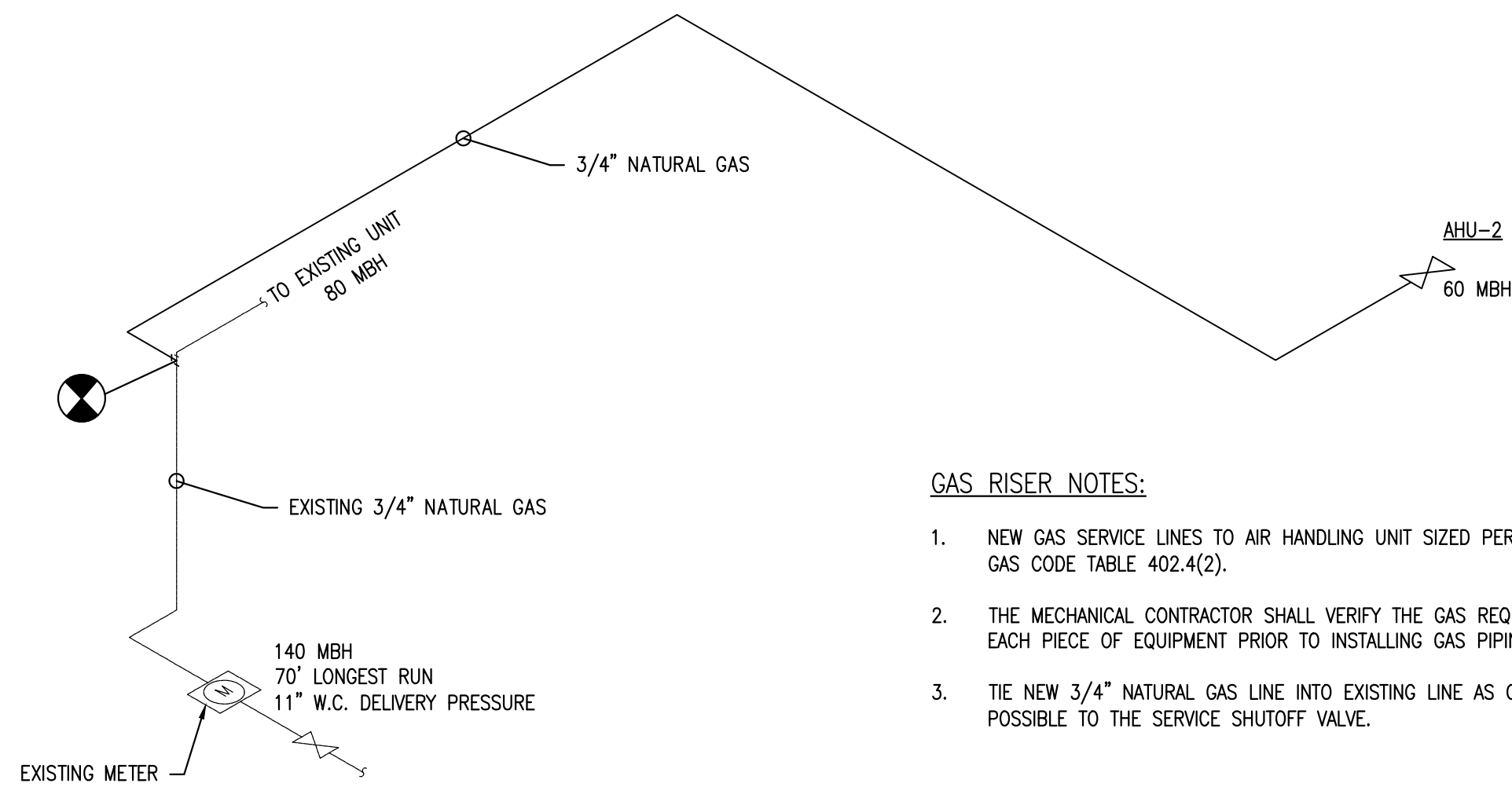


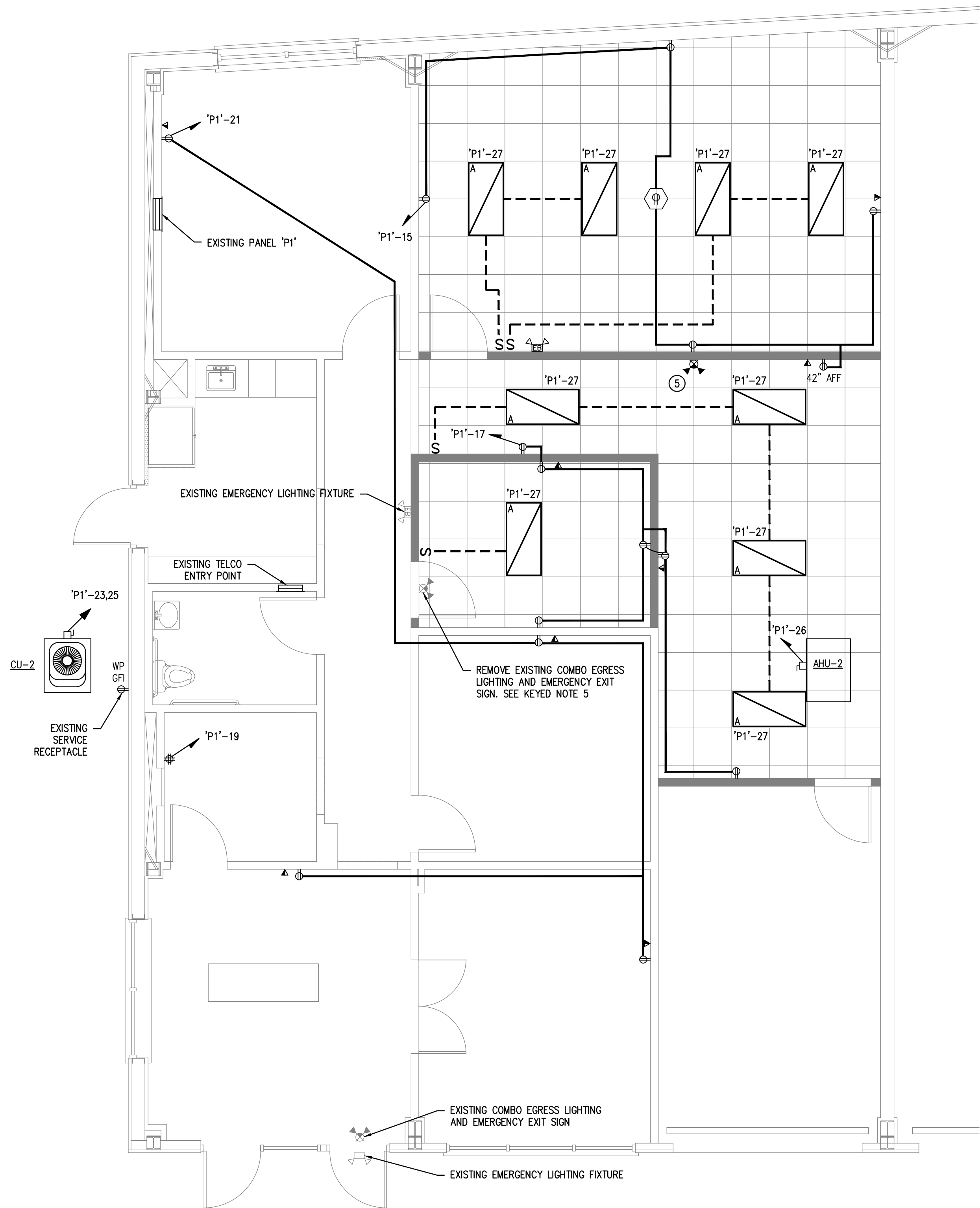
**HVAC CONTROL NOTES:**

1. DURING NORMAL OPERATION, THE MOTORIZED DAMPERS SHALL CONTROL THE OUTSIDE AIRFLOW TO 80 CFM AND THE RETURN AIRFLOW TO 770 CFM.
2. WHEN THE CO2 SENSOR IN THE CONFERENCE ROOM DETECTS CARBON DIOXIDE LEVELS GREATER THAN 1000PPM, THE MOTORIZED DAMPERS SHALL CHANGE THE OUTSIDE AIRFLOW TO 280 CFM AND THE RETURN AIRFLOW TO 570 CFM.



**GAS RISER NOTES:**

1. NEW GAS SERVICE LINES TO AIR HANDLING UNIT SIZED PER 2009 NC FUEL GAS CODE TABLE 402.4(2).
2. THE MECHANICAL CONTRACTOR SHALL VERIFY THE GAS REQUIREMENTS FOR EACH PIECE OF EQUIPMENT PRIOR TO INSTALLING GAS PIPING.
3. THE NEW 3/4" NATURAL GAS LINE INTO EXISTING LINE AS CLOSE AS POSSIBLE TO THE SERVICE SHUTOFF VALVE.



**KEYED NOTES:**

1. USE MANUFACTURERS CONCENTRIC VENT KIT. CONNECT FLUE AND OUTDOOR AIR PIPING PER INSTALLATION INSTRUCTIONS. SEAL WALL PENETRATION WEATHER-TIGHT.
2. DISCONNECT UNIT HEATER NATURAL GAS PIPING AND ELECTRICAL CONNECTIONS. ABANDON UNIT HEATER IN PLACE ABOVE CEILING. CAP NATURAL GAS LINE AND DEMO ELECTRICAL TO NEAREST JUNCTION BOX.
3. TIE NEW 3/4" NATURAL GAS LINE INTO EXISTING LINE AS CLOSE AS POSSIBLE TO THE SERVICE SHUTOFF VALVE.
4. OUTSIDE AIR INTAKE THROUGH SIDE WALL. SEAL PENETRATION WEATHER-TIGHT AND TERMINATE WITH WEATHER CAP AND INSTALL BIRD SCREEN. POSITION A MINIMUM OF 10' FROM BUILDING VENT.
5. COMBO EGRESS LIGHTING AND EMERGENCY EXIT SIGN FROM EXISTING GARAGE SPACE. CHANGE EXIT SIGN FACEPLATE TO INDICATE PROPER EXIT PATH DIRECTION.

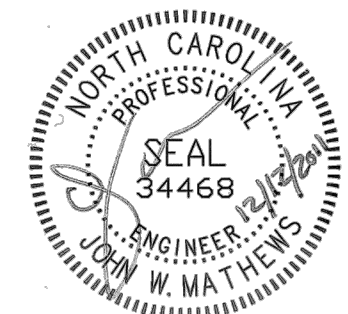
**ELECTRICAL NOTES:**

1. EXISTING LIGHTING FIXTURES ARE TO REMAIN ABOVE THE CEILING. DISCONNECT FROM SWITCH. DEMO SWITCH AND LEAVE UN-POWERED.
2. CIRCUIT ALL EMERGENCY EGRESS FIXTURES UPSTREAM OF ANY SWITCHING.

COPYRIGHT © 2011  
RUSTY LONG ARCHITECT  
ALL RIGHTS RESERVED.

THIS DRAWING IS THE PROPERTY OF  
RUSTY LONG ARCHITECT AND  
IS NOT TO BE REPRODUCED OR  
COPIED IN WHOLE OR IN PART  
WITHOUT WRITTEN PERMISSION  
FROM THE ARCHITECT.

**APOGEE** 1330 Chapel Hill Road  
Suite 202  
Chapel Hill, NC 27514  
(919) 858-7420 Fax (919) 858-7423  
AEC PROJECT NO. 2011-298  
NC LICENSE C-1668



**OFFICE FITUP**  
2019 PRODUCTION DR.  
SUITE 101  
APEX, NC

RUSTY LONG ARCHITECT  
1544 DIRKSON COURT  
CARY, NC 27511  
919-602-4180

**REVISIONS**


DATE: December 12, 2011  
PROJECT #: 2011-JSB  
DRAWN BY: JMB2  
CHECKED BY: JWM

**MECHANICAL &  
ELECTRICAL PLANS**

**ME101**

☒ FOR CONSTRUCTION  
☐ NOT FOR CONSTRUCTION